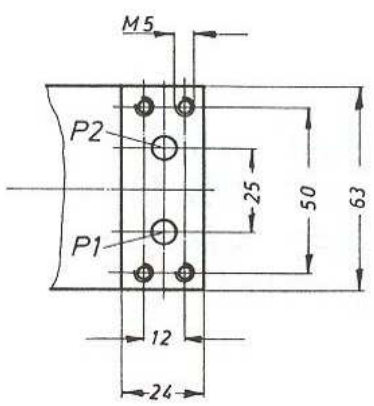
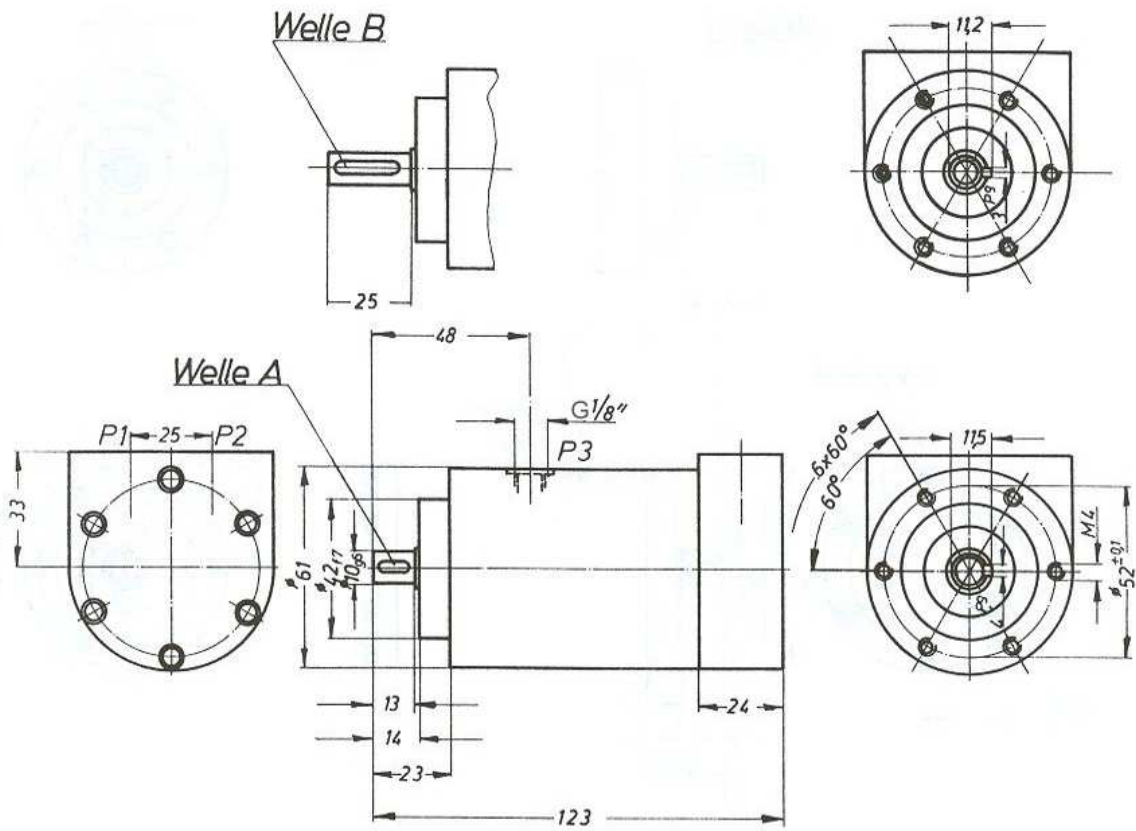
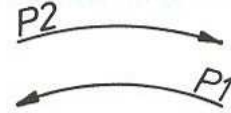


Ölzufuhr bei



- Druckölanschluß P1  $\phi 8$
- Druckölanschluß P2  $\phi 8$
- Leckölanschluß P3 G1/8"
- P3 Lecköldruck max. 0,5 bar

Welle A oder B bei Bestellung angeben

Motor 1,5kg

|                        |                        |            |                                   |             |                |             |   |
|------------------------|------------------------|------------|-----------------------------------|-------------|----------------|-------------|---|
| HMSV                   | 2,6                    | 279        | 0,044                             | 5000        | 100            | 140         | 5 |
| HMSV                   | 3,7                    | 353        | 0,055                             | 3000        | 100            | 140         | 5 |
| Motor type             | q [cm <sup>3</sup> /U] | M [Nm/bar] | $\eta_{max}$ [min <sup>-1</sup> ] | P1max P2max | $\Sigma$ P1 P2 | P1min P2min |   |
| Alle Drücke [P] in bar |                        |            |                                   |             |                |             |   |

**AXIALKOLBEN-VORSCHUBMOTOR SK251.14**



**MW Hydraulik GmbH**

Tel. 06188 81291 Lange Hecke 3  
 Fax. 06188 8454 63796 Kahl