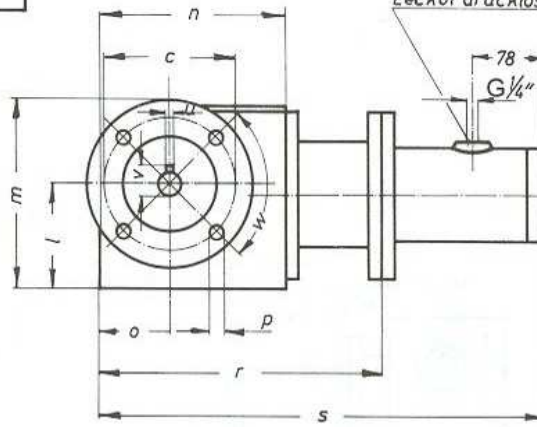
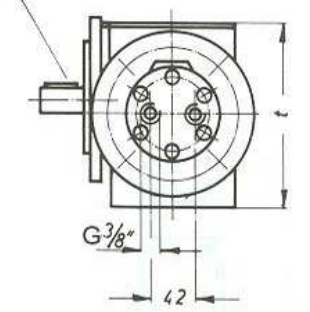
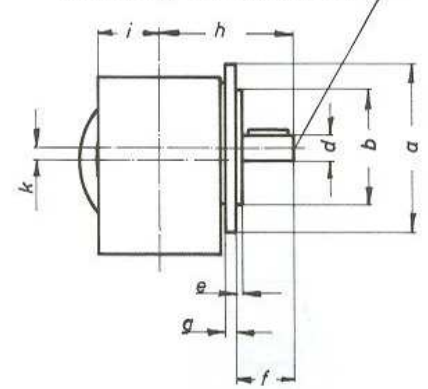


FLANSCHAUSFÜHRUNG

Paßfeder nach DIN6885 Blatt 1

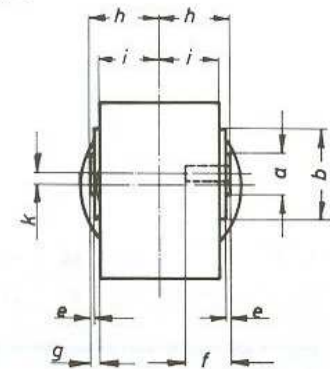
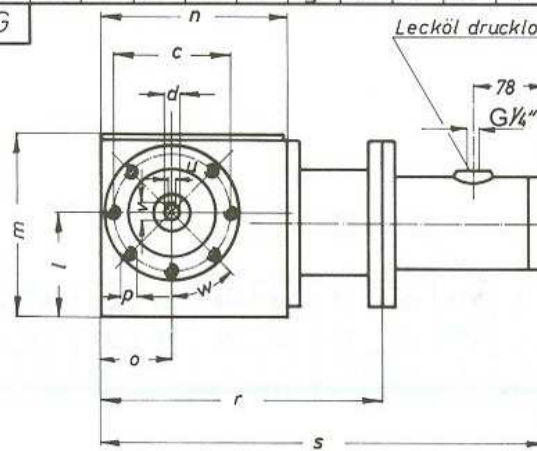
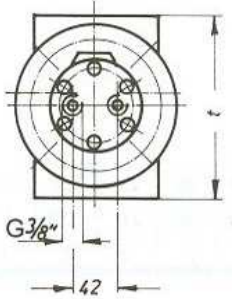


Zentrierung nach DIN 332 Blatt 2



SK02050	F	HMS10-HMS25	160	110 _{js}	130	25 _{h6}	4	50	10	135	60	75	98	178	180	70	9	269	437	169	8 ^{PS}	28	90°	25
SK12063	F	HMS10-HMS25	200	130 _{js}	165	30 _{h6}	4	60	12	156	67	13	119	219	196	75	11	285	453	193	8 ^{PS}	33	90°	29
SK12080	F	HMS10-HMS25	200	130 _{js}	165	35 _{h6}	4	70	12	184	75	19	146	246	242	101	11	331	499	252	10 ^{PS}	38	90°	38
SK33100	F	HMS10-HMS25	250	180 _{js}	215	45 _{h6}	4	90	16	232	92	74	182	307	285	122	14	434	602	312	14 ^{PS}	485	90°	69
SK43125	F	HMS10-HMS25	350	250 _{js}	300	60 _{h6}	5	120	20	307	115	100	222	397	352	150	18	509	677	378	18 ^{PS}	64	90°	108
Getriebe		Motoren	a	b	c	d	e	f	g	h	i	k	l	m	n	o	p	r	s	t	u	v	w	kg

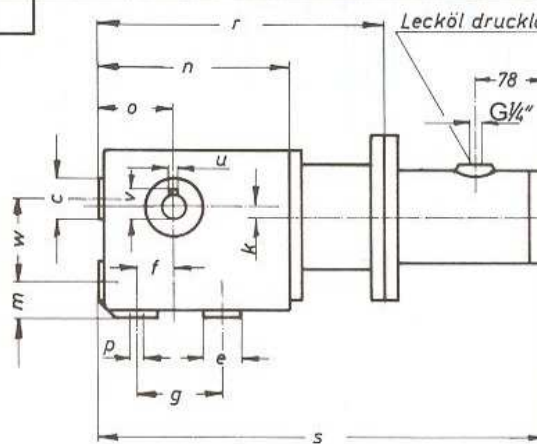
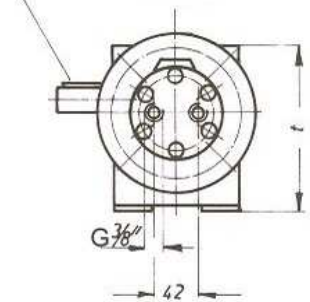
HOHLWELLEN AUSFÜHRUNG



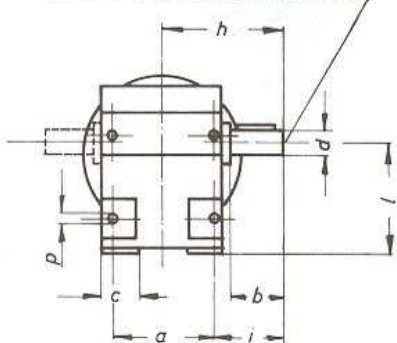
SK02050	A	HMS10-HMS25	45	95 _{js}	115	25 ^{H7}	3	45	6	66	60	75	98	180	180	70	M8	269	437	169	8 ^{PS}	283	45°	25
SK12063	A	HMS10-HMS25	50	95 _{js}	115	30 ^{H7}	4	50	7	74	67	130	119	199	196	75	M8	285	453	193	8 ^{PS}	333	45°	29
SK12080	A	HMS10-HMS25	65	130 _{js}	165	40 ^{H7}	5	55	9	84	75	190	146	251	242	101	M10	331	499	252	12 ^{PS}	433	45°	38
SK33100	A	HMS10-HMS25	85	180 _{js}	215	50 ^{H7}	5	70	9	101	92	74	182	311	285	122	M12	434	602	312	14 ^{PS}	538	45°	69
SK43125	A	HMS10-HMS25	95	230 _{js}	265	60 ^{H7}	6	89	10	125	115	100	222	398	352	150	M12	509	677	378	18 ^{PS}	644	45°	108
Getriebe		Motoren	a	b	c	d	e	f	g	h	i	k	l	m	n	o	p	r	s	t	u	v	w	kg

FUSSAUSFÜHRUNG

Paßfeder nach DIN6885 Blatt 1



Zentrierung nach DIN 332 Blatt 2



SK02050		HMS10-HMS25	100	50	34	25	35	35	80	115	65	75	100	35	185	75	11	274	442	162	8 ^{PS}	28	80	25
SK12063		HMS10-HMS25	110	60	40	30	40	45	100	134	79	13	112	35	200	80	11	289	457	182	8 ^{PS}	33	100	29
SK12080		HMS10-HMS25	130	70	40	35	40	60	130	160	95	19	140	40	241	100	14	330	498	227	10 ^{PS}	38	130	38
SK33100		HMS10-HMS25	150	90	50	45	50	75	135	195	120	74	180	70	288	125	18	437	605	288	14 ^{PS}	485	135	69
SK43125		HMS10-HMS25	200	120	60	60	70	92	180	225	155	100	225	82	352	150	22	509	677	348	18 ^{PS}	64	180	108
Getriebe		Motoren	a	b	c	d	e	f	g	h	i	k	l	m	n	o	p	r	s	t	u	v	w	kg

HYDRO - GETRIEBEMOTOREN

SK3513.8



MW Hydraulik GmbH

Tel: 06188 81291 Lange Hecke 3
 Fax: 06188 8454 63796 Kahl